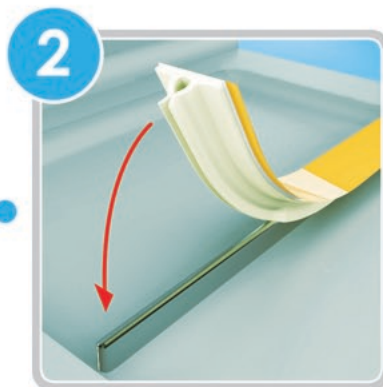


# YOUR SIMPLE GUIDE TO INSTALLING YOUR MATRIX

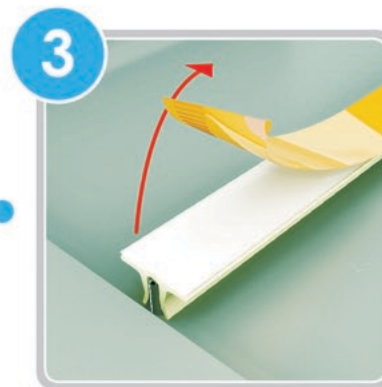
**C&T MATRIX**



**1**  
Cut Matrix to length of  
Creasing Rule



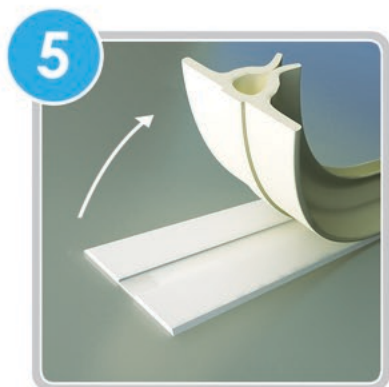
**2**  
Position Matrix over rule  
and push into place



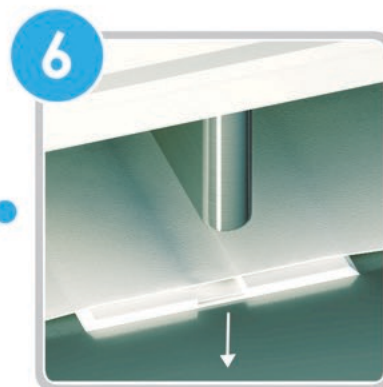
**3**  
Remove backing strip to  
reveal adhesive membrane



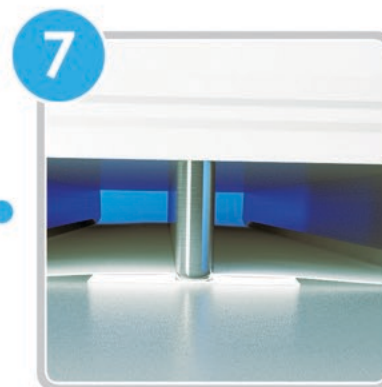
**4**  
Lock die into press and index  
machine to place Matrix  
on opposing platen



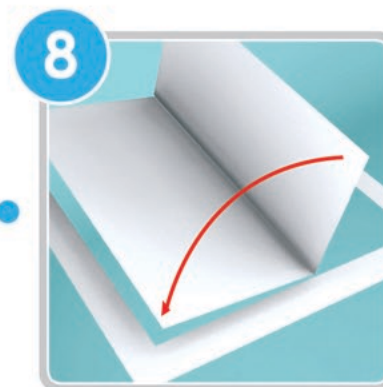
**5**  
Remove locator strip by  
pulling firmly upwards



**6**  
Position board and  
activate the machine



**7**  
Board is creased and cut



**8**  
Remove board and  
test the crease

For more information log on to [www.channel-matrix.com](http://www.channel-matrix.com)